



Criminal Damage

Presentation to Safer Stockton Partnership

Chief Superintendent Gordon Lang
Head of Neighbourhood and Partnership Policing

Criminal Damage Crime Classification

- Arsons
- Damage to dwellings
- Damage to other buildings
- Damage to vehicles
- Other damage
- Racially/religiously aggravated damage
- Threats or possession with intent to cause damage

Progress to date

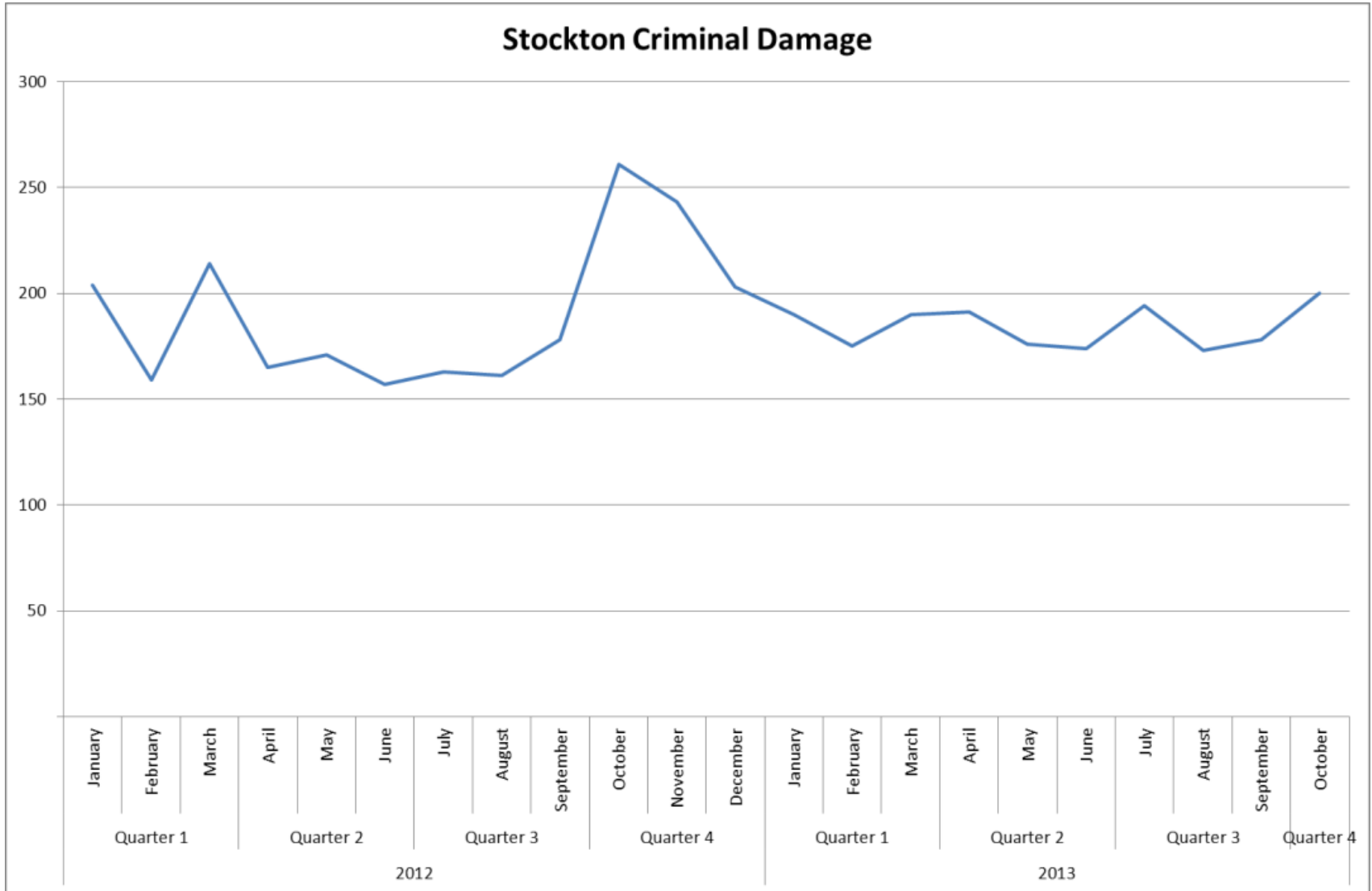
- We have maintained our approach of using prevention, support and enforcement to tackle this issue.
- Offered advice and support to repeat callers of Anti-Social Behaviour with new procedures implemented.
- Multi-agency approach continues to be taken to tackle repeat offenders of ASB through the Problem Solving and Joint Action Groups with six ASBOs and 23 ABCs implemented in the 12 month period.
- Continued analysis of problem areas using an intelligence led approach in order to direct operational activity and utilise resources effectively.

Stockton Financial YTD Performance

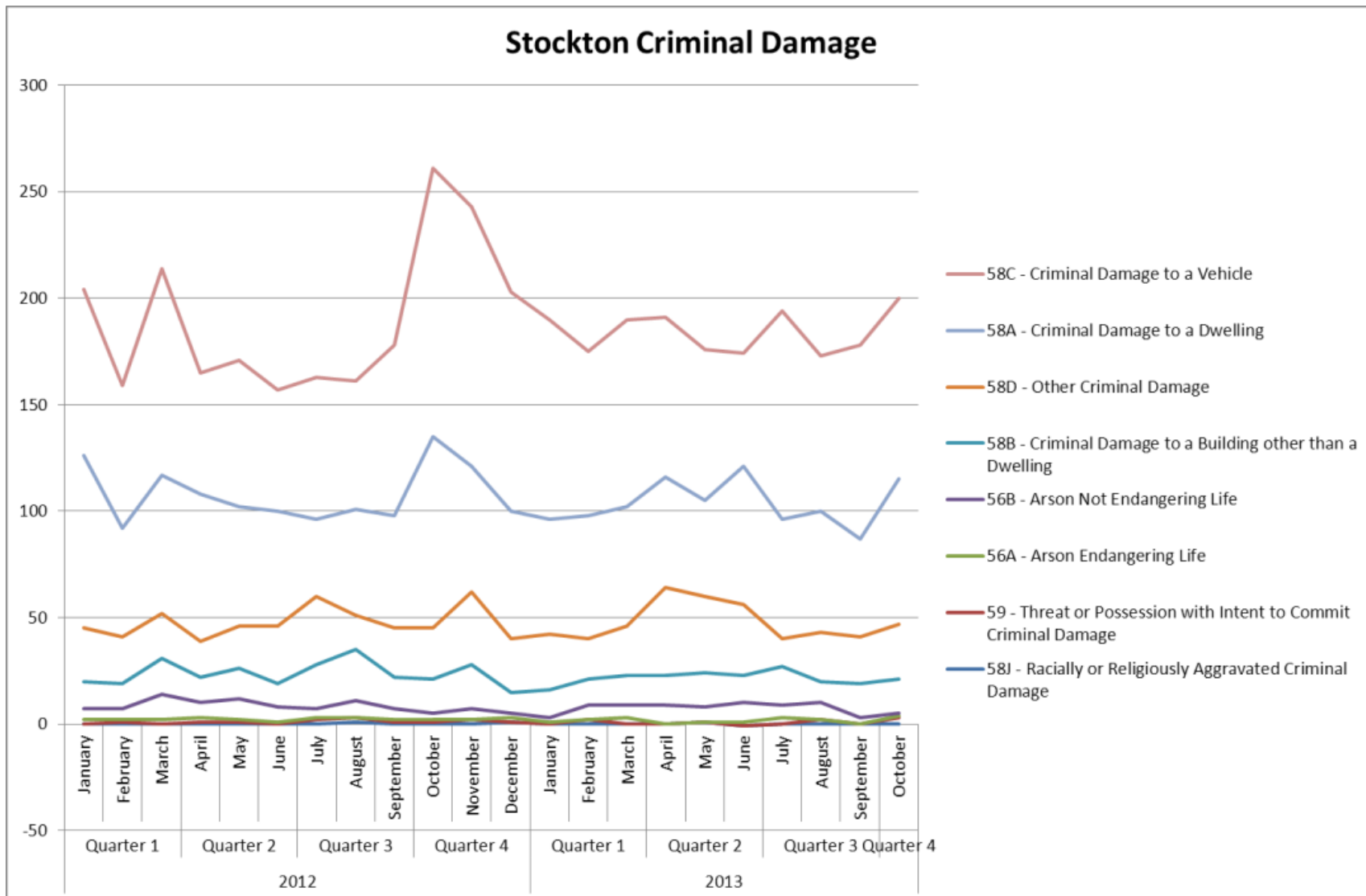
To end of October

	April - End October		Difference
	2012	2013	
Arson Endangering Life	7	6	-1
Arson Not Endangering Life	44	43	-1
Criminal Damage to a Dwelling	408	389	-19
Criminal Damage to a Building other than a Dwelling	113	103	-10
Criminal Damage to a Vehicle	516	546	30
Other Criminal Damage	159	194	35
Racially or Religiously Aggravated Criminal Damage	1	0	-1
Threat or Possession with Intent to Commit Criminal Damage	8	5	-3
Overall Damage	1256	1286	30

Damage Trends



Damage Trends



Ward Distribution of Damage

Financial Year to Date compared

Ward	FYTD April - End October		Difference
	2012	2013	
NORTON_SOUTH (S)	29	59	30
BILLINGHAM_SOUTH (S)	48	73	25
BILLINGHAM_CENTRAL (S)	49	68	19
ROSEWORTH (S)	42	56	14
UNKNOWN (S)		13	13
VILLAGE (S)	31	41	10
NEWTOWN (S)	72	80	8
EAGLESCLIFFE (S)	30	37	7
YARM (S)	30	37	7
BILLINGHAM_NORTH (S)	23	29	6
INGLEBY_BARWICK_WEST (S)	17	22	5
STOCKTON_TOWN_CENTRE (S)	154	159	5
BILLINGHAM_WEST (S)	15	18	3
NORTHERN_PARISHES (S)	12	15	3
INGLEBY_BARWICK_EAST (S)	18	17	-1
WESTERN_PARISHES (S)	13	12	-1
AYRESOME (S)	3	1	-2
HARDWICK (S)	82	80	-2
NORTON_WEST (S)	17	15	-2
NORTON_NORTH (S)	78	73	-5
BILLINGHAM_EAST (S)	77	70	-7
PARKFIELD_AND_OXBRIDGE (S)	92	85	-7
HARTBURN (S)	21	13	-8
GRANGFIELD (S)	35	26	-9
MANDALE_AND_VICTORIA (S)	108	97	-11
BISHOPSGARTH_AND_ELM_TREE (S)	37	22	-15
FAIRFIELD (S)	31	13	-18
STAINSBY_HILL (S)	92	55	-37

Damage across the force area

Cleveland Criminal Damage

